

BLACK COUNTRY CUSTOMS™



LA-STUDIO USER MANUAL



DESIGNED, ENGINEERED & MADE IN THE U.K.

CONTENTS

INTRODUCTION	2
CONTROLS	3
LA-STUDIO FRONT PANEL	3
LA-STUDIO REAR PANEL	5
CONNECTIONS	7
TWO NOTES TORPEDO.....	9
PRESETS	10
MIDI.....	14
TABLE OF MIDI CC NUMBERS	14
SPECIFICATIONS	16
DIMENSIONS.....	16
SAFETY AND WARNINGS	17

INTRODUCTION

1969. The year Heavy Metal was born. Integral to that explosion of power and attitude was a humble guitar amp in the hands of the one-and-only Mr Tony Iommi. The amp? The Laney Supergroup.

The LA100BL Supergroup was unleashed on the world in 1967; while everyone else was celebrating the summer of love, Laney had visions of the future - a future birthed from the tonal prowess of Tony. Several reissues and special editions later, we fast forward to 2022 and that very same amp is back; better-than-ever and retrofitted with everything the modern player demands.

Introducing the LA-STUDIO, a 3W fully featured, tube driven tone machine. Based on the now legendary LA30BL head, it's driven by 3 ECC83 preamp tubes and a single 12BH7 power tube. Of course, there's a fully reactive load box built-in to guarantee totally silent operation at home too.

Not only that we've partnered up with Two Notes, world leaders in cabinet emulation, to include their Torpedo technology to make this a tool at home in any studio, home and even live on stage.

The LA-STUDIO, all the classic looks, tone and feel of a truly vintage style and sounding head but filled with cutting edge technology. The LA-STUDIO offers you real hot tubes, real hot tone, real feel, and real dynamics.

Why the LA-STUDIO.

The LA-STUDIO is a vintage designed low wattage, great sounding tube amp, something we are very proud of. The LA-STUDIO's design comes from a heritage of amp design where everything about building an amp was done in the pursuit of tone.

Vintage amps have a particular sound and feature set to them which we have stayed faithful to. The LA-STUDIO is a very straight forward amp - a single channel, no reverb, no FX loop and just the right amount of gain to be driven to the edge of breakup then pushed over the edge into glorious tube distortion by your favourite drive pedals, sat where they should be on the floor in front of your amp.

So why no FX loop? To build an FX loop into a guitar amp you must break the signal path at a convenient point to insert the FX loop. The unique and pleasing tonal character of a vintage amp comes from the interaction between a preamp and the power amp and having nothing in-between to break that interaction produces the best tone - full stop.

The LA-STUDIO is primarily designed for use in a recording studio and in particular a home recording set-up. In most modern recording situations, effects are added within a DAW. So, the fact that the unit does away with an FX loop in the pursuit of the ultimate tone is not an issue when it comes to using FX.

Tone is everything.



The LA-STUDIO is THE REAL PLUGIN.

CONTROLS

LA-STUDIO FRONT PANEL



- POWER SWITCH
 - Usually, you must make sure your amp is connected to a load before turning on. However, the LA-STUDIO has an internal reactive load making it possible to run without anything connected to it.
- BRAKE SWITCH
 - When engaged the Brake reduces the output of the LA-STUDIO from 3W RMS to 0.1W RMS. This is perfect for driving the LA-STUDIO hard without producing excessive sound levels.
- POWER INDICATOR
 - Indicates that the amplifier is powered up.
- PRESENCE
 - Boosts the upper mids and highs within the output section. Should be adjusted to your personal tastes, set to '0' is a good starting point.
- BASS
 - Adjusts the low-end response of the signal. Turning it clockwise increases the amount of bottom-end, giving you a fuller tone. As the amplifier is driven harder and louder you may find the need to dial out a little bass to stop it getting muddy. In most cases, depending on the guitar you are using '5' is a good starting point.
- MIDDLE
 - Adjusts the mid frequency response of the signal. Adjusts the midrange. Turning it clockwise increases the amount of mids. Turning it anti clockwise will reduce the mids and produce a more mid-scooped sound. In most cases, depending on the guitar you are using '5' is a good starting point.
- TREBLE
 - Adjusts the high frequency content of the signal. Turning it clockwise increases the amount of top-end, giving your tone clarity and brightness. Turning it anti clockwise will produce a warmer sound, ideal for dialling in smooth warmer tones. In most cases, depending on the guitar you are using '5' is a good starting point.
- GAIN
 - Adjusts the level of Gain/Distortion present in the signal. Also contributes to the overall listening level of the amplifier.



- BASS INPUT HI
 - Has a neutral frequency and is great for pedals and boards.
- BASS INPUT LO
 - Has the same tonal characteristics as Bass Input 1 but with a lower gain setting.
- TREBLE INPUT HI
 - Has an accentuated high-end response.
- TREBLE INPUT LO
 - Has the same tonal characteristics as Treble Input 1 but with a lower gain setting.

Channel jumping

It is possible for a player to mix the tonal and gain characteristics of each input on the LA-STUDIO by what is known as channel jumping. To do this simply choose the initial channel you want to use. Let's say the Bass Input 1, connect your guitar as normal. Now using a regular patch cable connect Bass Input 2 to an input on the treble channel. Choose input 1 or 2 depending on how much gain you want. The result, you have more treble in your signal without losing the bass response generated by the Bass Input. Channel jumping can produce some great sounds so do not hesitate to experiment.

LA-STUDIO REAR PANEL



- GROUND LINK
 - The ground link switch will isolate the ground on the LA-STUDIO should you encounter any ground noise/Ground Loops from any other equipment you have connected via the XLR out.
- XLR BALANCED OUTPUT
 - The balanced output XLR jack is a direct output from Two notes Torpedo Embedded. By connecting this output to front of house or an audio interface you can capture LA-STUDIO's tone with no need for a cabinet or microphone.
 - To run the output of the LA-STUDIO to an external device, connect to your audio interface or PA with a good quality XLR cable. Set the amplifier up the way you intend to play, (EQ, volume) and then adjust the output of the balanced out using the LEVEL control.
 - Set the parameters of the audio interface/PA to get your desired sound.
- HEADPHONE SOCKET
 - The headphone jack on the LA-STUDIO comes directly from the Two notes output! This allows you to use the amplifier with any of the selected virtual cabinet settings through your headphones. By utilizing the built-in reactive load, you can play the amp with no speaker using only the headphone jack as the output for quiet playing and silent recording.
- VIRTUAL CABINET SELECTOR
 - This 6-position selector switch lets you to select which of the first 6 Two notes presets is active on the XLR out. See [TWO NOTES TORPEDO](#)
- LEVEL
 - Sets the level of signal sent to an external device connected to the XLR balanced output and to the headphone output.
- PEAK INDICATOR
 - Shows when the output from the Two notes Torpedo Embedded is clipping. If the PEAK indicator lights up it is recommended that you back off the LEVEL control until the PEAK indicator is no longer illuminating.



- USB CONNECTOR
 - The USB connector allows you to connect your computer to the LA-STUDIO and access the Two notes Torpedo Embedded software. Using a good quality USB cable, you can connect to the Two notes Torpedo Embedded software which will enable you to edit the presets loaded in the Virtual Cabinet section of the LA-STUDIO, modify the presets, create new ones from scratch, or load your own third-party Impulse Responses! See [TWO NOTES TORPEDO](#)
- MIDI IN
 - Connect the MIDI out of a MIDI equipped device to allow cabinet pre-set switching via MIDI Program changes (MIDI PC) and specific parameter control via MIDI Control changes (MIDI CC). See [MIDI](#)
- Midi OUT/THRU
 - Should be used to connect additional midi equipped devices downstream of the LA-STUDIO.
- SPEAKER SOCKETS (16 Ohm & 8 Ohm)
 - 2 x ¼" mono jack sockets are provided for connecting either an 8 Ohm cabinet or a 16 Ohm cabinet. Since the LA-STUDIO is designed to be used silently in the Home/Studio environment it features a high-quality reactive load attenuator, so it is not necessary to connect a speaker cabinet to the unit when using just the D.I out or headphones.

WARNING Mismatching your speaker impedance will reduce the performance of your LA-STUDIO and in extreme cases may damage the unit. Only use one impedance selection at a time and never below the rated minimum load.

The LA-STUDIO - THE REAL TUBE plug in.

CONNECTIONS

The LA-STUDIO can be connected in several different ways depending on your requirements. Below are some common connections: -

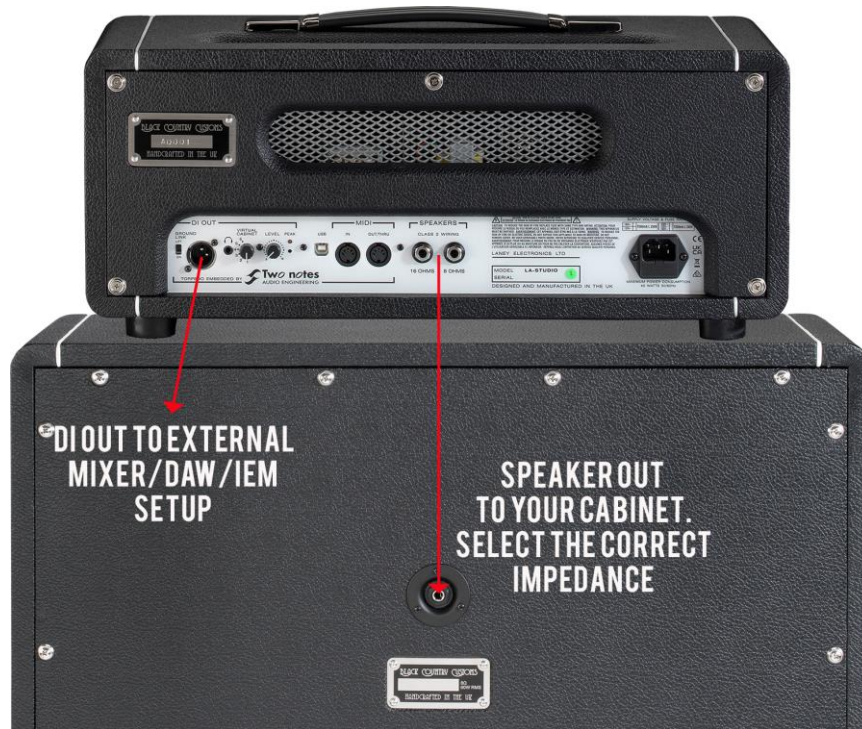


Figure 1 LA-STUDIO guitar into head, head into cab, head into FOH mixer



Figure 2 LA-STUDIO guitar & pedals into head

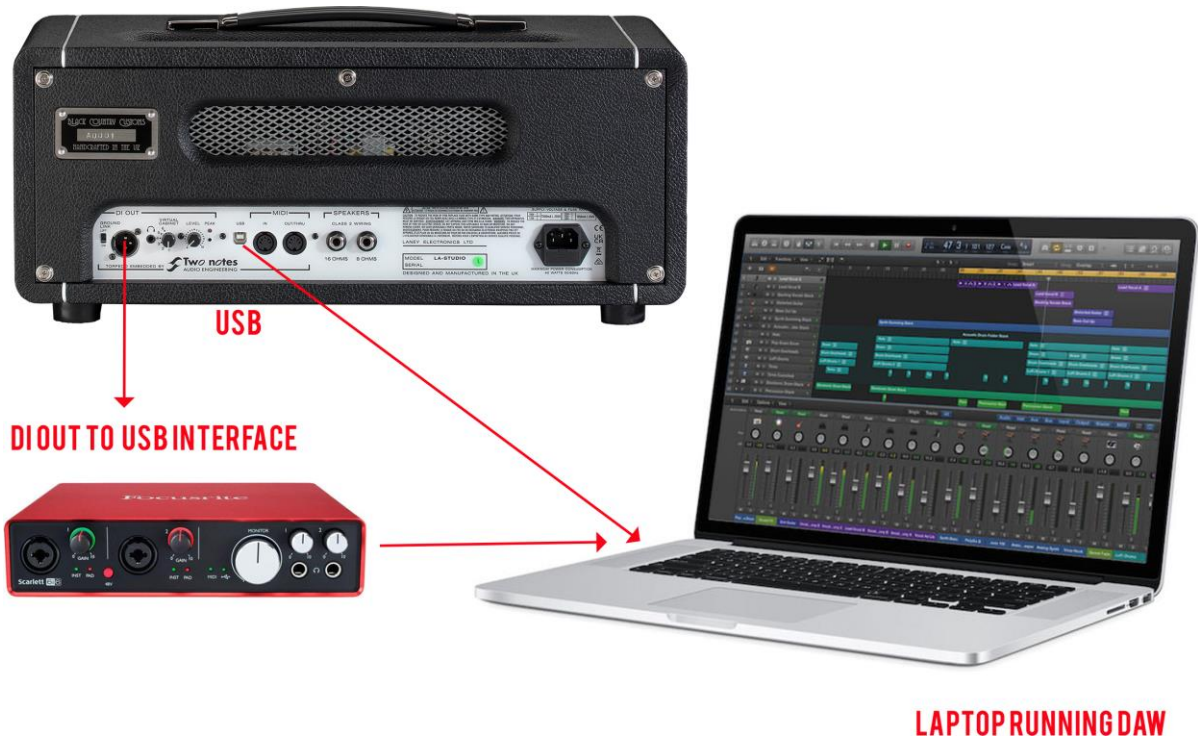


Figure 3 LA-STUDIO guitar into head, head into DAW



Figure 4 LA-STUDIO guitar into head, head into FOH, USB-MIDI interface & MIDI pedal board

TWO NOTES TORPEDO

To bring the Supergroup feel to the modern player Laney has partnered with Two notes to include a fully integrated Torpedo module. Letting you capture all the glorious tone of the LA-STUDIO driven hard with all the dynamic response you expect from a high quality, all tube amp but without the need to connect a physical cabinet.



The LA-Studio ships with 6 curated pre-loaded presets using two Laney DynIR cabinets. They are available via the XLR out without any need to use a PC or any apps. Though if you want further control, we offer that!

What is DynIR you ask? The magicians are Two notes have taken the art virtual cabinet simulation to an entire new level. With the DynIR and the Torpedo Remote software you can take total control over the cabinet type, the virtual characteristics of the cabinet environment and the microphones used to capture the cabinets sound. Giving you the ultimate control of your amps output whether that going into your DAW or directly to the front of house on stage. You never need to mic a cabinet again to get the perfect sound every time.

To get the most from the Torpedo module, make sure to download and install the latest TORPEDO REMOTE which can be downloaded from

<https://www.two-notes.com/en/downloads/>

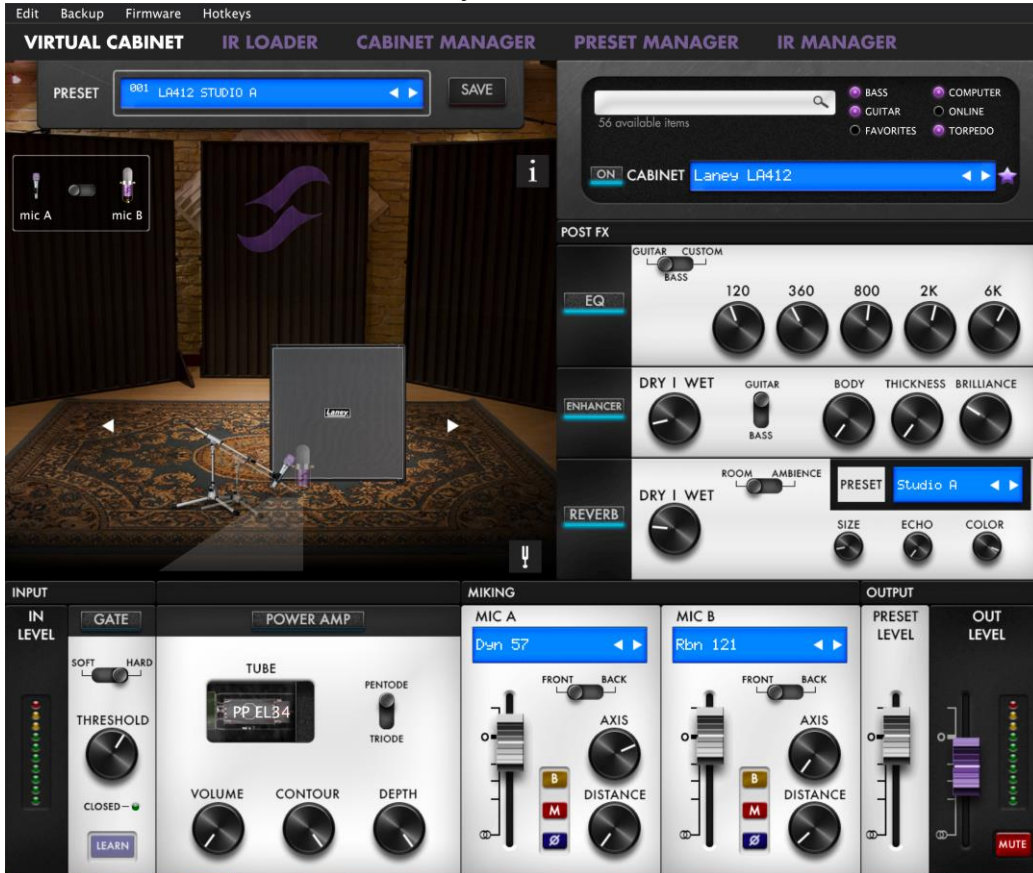
for any question relating to Torpedo Remote software please visit

<https://support.two-notes.com/>

PRESETS

The LA-Studio comes with 6 curated pre-loaded cabinets, these are:

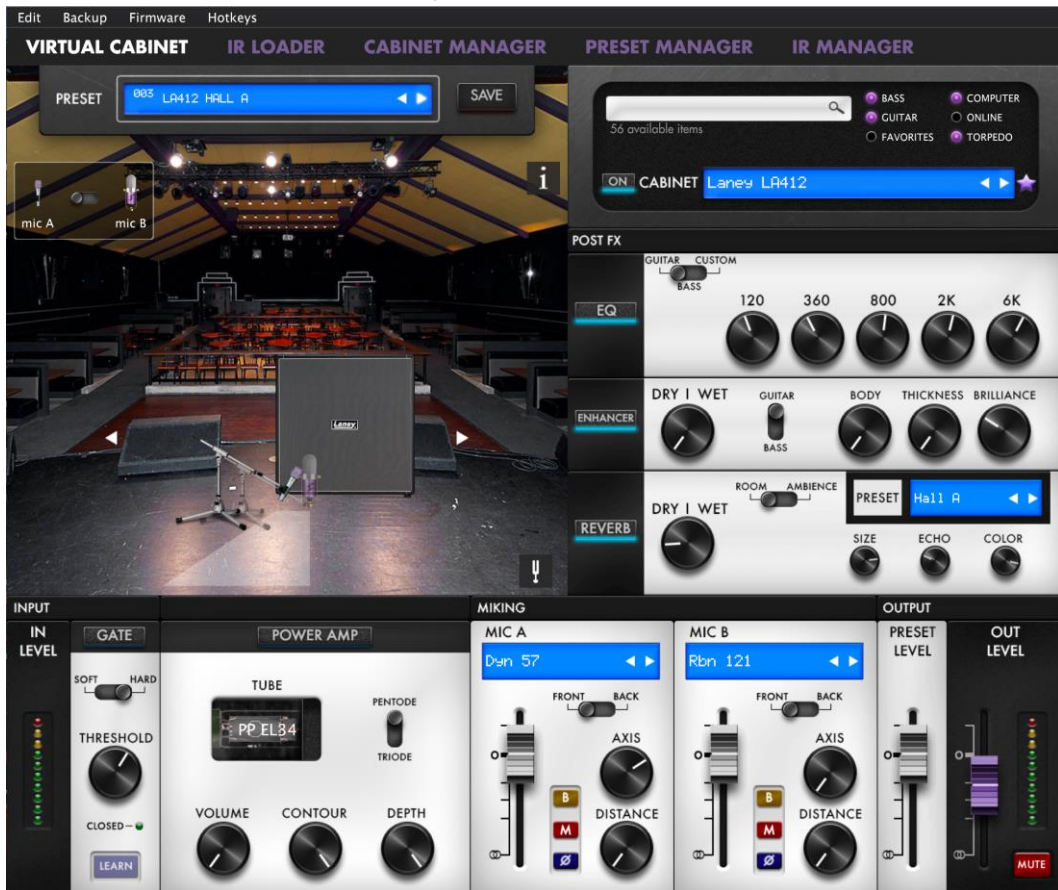
- Preset 1 - STUDIO A - The LA412 in a dry and intimate studio environment



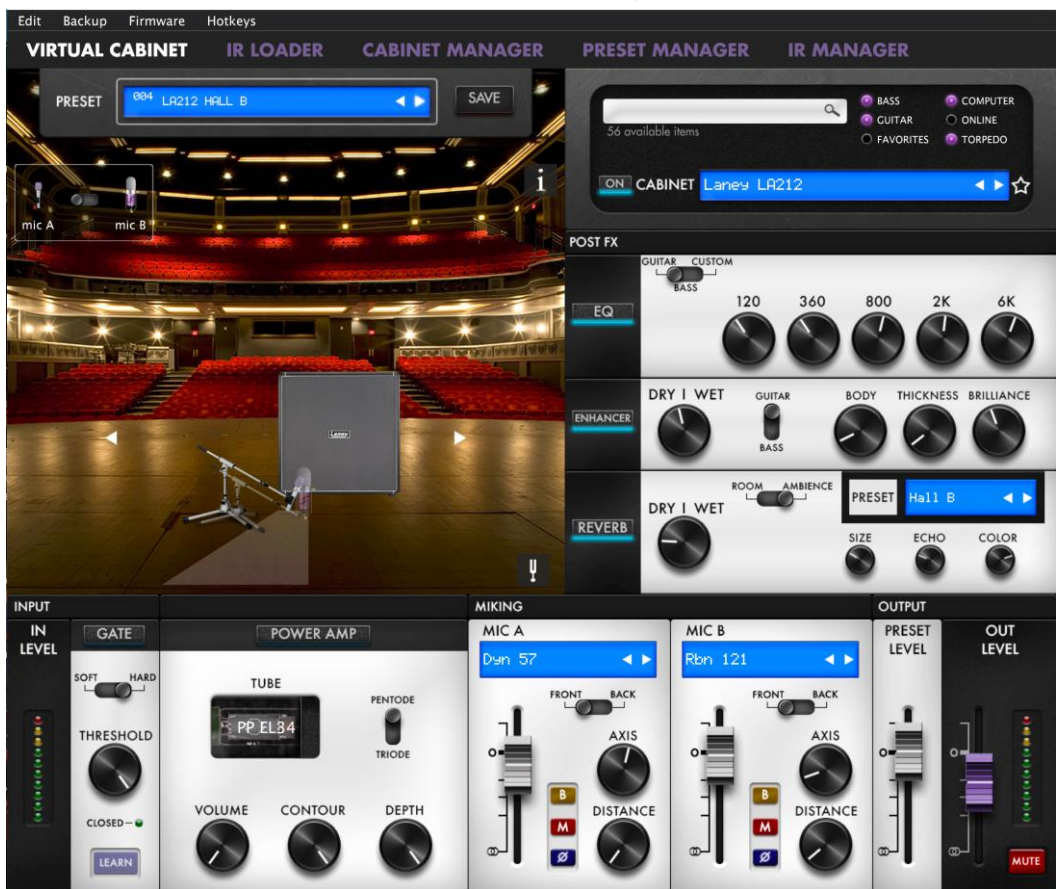
- Preset 2 - STUDIO A - The LA212 in a dry and intimate studio environment



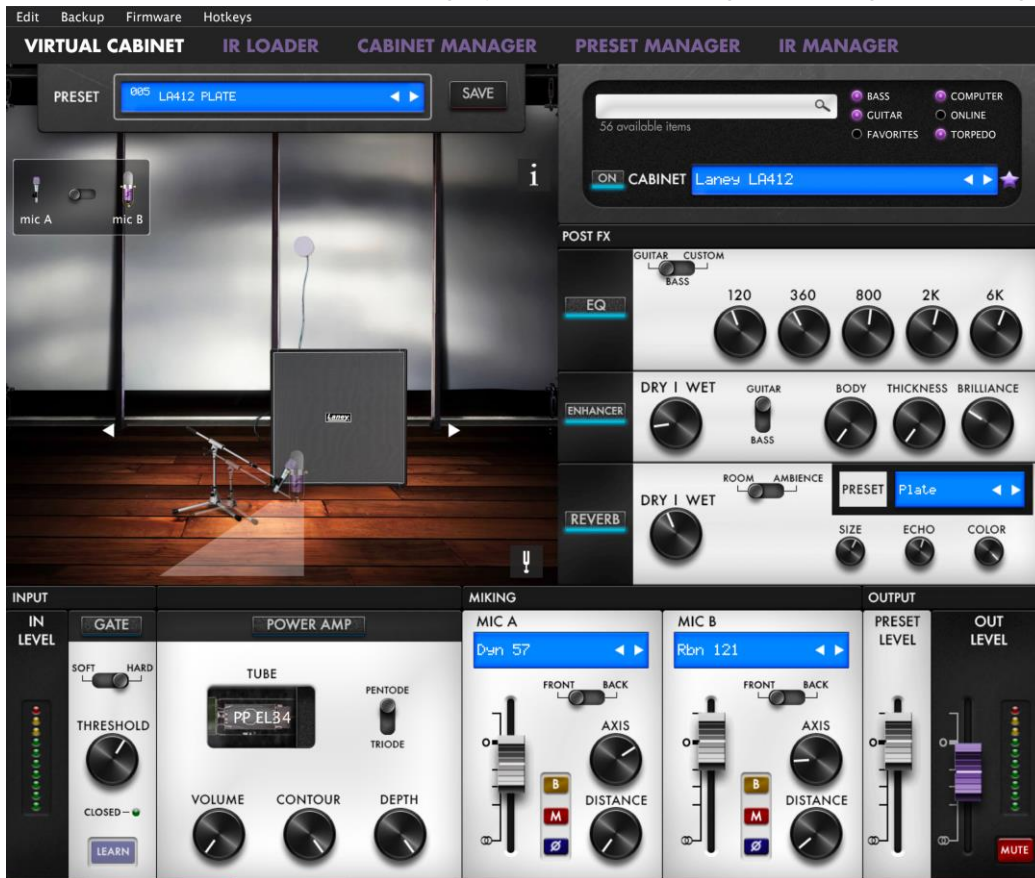
- Preset 3 - HALL A - The LA412 in a bright medium sized venue.



- Preset 4 - HALL B - The LA212 in a classic concert hall, with warm reverb



- Preset 5 - PLATE - The LA412 with a large plate reverb, vintage, and huge sounding



- Preset 6 - CATHEDRAL - The LA212 in a tiled cathedral, ethereal and angelic ambience



Each of the 6 presets is modelled around two Laney cabinets expertly measured and converted to DynIR's by Two notes. These cabinets included with the LA-Studio are:

- Laney LA412
 - An authentic replica of the original 1969 cabinet. An oversized 4x12" cabinet loaded with four Celestion G12H 75Hz.
- Laney LA212.
 - The classic 2x12" offset cabinet of the early 2000's. A pair of matched Celestion G12M-25 Greenback gives both vintage and modern tones.

In addition to the 6 pre-loaded presets, the LA-STUDIO comes loaded with an extensive library of additional Two notes virtual cabinet Dyn IRs, consisting of the following options which are accessible via the USB app.

To access these addition cabinets, you first need to visit <https://www.two-notes.com/en/downloads/> and download then install the latest TORPEDO REMOTE software.

With the LA-STUDIO connected via USB and turned on open the Torpedo Remote software.

The Software will recognise your LA-STUDIO and you will then be directed to log in as a "Guest" or "Register" your unit by creating an account. If you decide to create an account, you will be rewarded with the addition of 2 bonus DynIRs to your account - see below for details.

Your LA-STUDIO comes with 8 additional high quality DynIR's courtesy of Two notes. These are: -

- Brit 65C (Marshall 4x12)
- GreenArtO (Marshall 4x12)
- Free Rock (VHT 4x12)
- Eggbeater (Egnater 2x12)
- Radcat 25W (Badcat 4x12)
- Voice Modrn (Vox AC30)
- Watt FanO (Hiwatt 2x12)
- Tanger 30C (Orange 2x12)

Laney Black Country Customs LA-Studio virtual cabinets			
Slot	Name	Action	
::	1 Laney LA412	UNLOAD	
::	2 Laney LA212	UNLOAD	
::	3 Brit 65C	UNLOAD	
::	4 GreenArtO	UNLOAD	
::	5 Free Rock	UNLOAD	
::	6 Eggbeater	UNLOAD	
::	7 RadCat 25W	UNLOAD	
::	8 VoiceModrn	UNLOAD	
::	9 Watt FanO	UNLOAD	
::	10 Tanger 30C	UNLOAD	

As a reward for creating a Two notes account and registering your LA-STUDIO you will also receive 2 BONUS Dyn IR's. These are: -

- SilverJen (Fender Twin with Jensen Speakers)
- Calif StdC (Mesa 4x12 recto).

You can change the virtual cabinets and edit all their options and save them to your Two notes account for future use. Whilst your LA-STUDIO is connected to your Torpedo Remote software you can change any of the cabinets in the 6 pre-load slots on the LA-STUDIO by simply moving the cabinet of your choice into the relevant slot on the LA-STUDIO.

NOTE: If you're using MIDI you can access up to 128 cabinets presets live!



MIDI

Each pre-set on the LA-STUDIO has a single program number. Preset 001 is recalled with MIDI PC 1, and you can recall the 128 virtual cab pre-sets with MIDI PC 1 through MIDI PC 128 in this manner. This allows real time switching of pre-sets, for example when the player switches from a clean tone to a lead tone, he can switch from a 2 x12 cabinet to a 4 x 12 cabinet at the same time.

MIDI CC - Control Change - For more advanced applications the use Control Change signals may be appropriate.

In most normal applications MIDI PC signals (virtual cabinet pre-set recall) for the LA-STUDIO will be suitable. But in more specific and advanced situations direct control of the parameters listed below can be achieved by MIDI CC commands.

Consult the table at the end of this manual that indicates the Control Change (CC) numbers for every parameter, as well as their range and behaviour.

TABLE OF MIDI CC NUMBERS

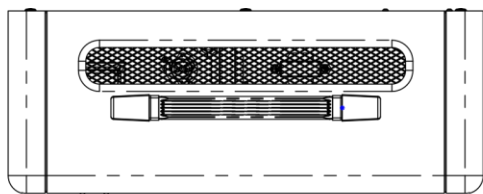
Param	CC	Range	Behaviour
Power Amp			
On/Off	0	0-1	0 = Off; 1 = On
Model	1	0-7	0 = Model #0; 1 = Model #1...
Volume	2	0-30	0 = 0dB; 30 = 30dB
Presence	3	0-127	0 = 0%; 63 = 50%; 127 = 100%
Depth	4	0-127	0 = 0%; 63 = 50%; 127 = 100%
Character	5	0-1	0 = Triode; 1 = Pentode
Cab/Mic			
On/Off	6	0-1	0 = Off; 1 = On
Unused	7	N.A.	N.A.
Cab	8	0-num files	0 = Cab #0; 1 = Cab #1...
File A	9	0-num files	0 = File #0; 1 = File #1...
File B	10	0-num files	0 = File #0; 1 = File #1...
Folder A	11	0-3	0= User 0; 1 = User1; 2 = User 2; 3 = User 3
Folder B	12	0-3	0= User 0; 1 = User1; 2 = User 2; 3 = User 3
Mic A	13	0-7	0 = Mic #0; 1 = Mic #1...
Distance A	14	0-127	0 = 0%; 63 = 50%; 127 = 100%
Center A	15	0-127	0 = 0%; 63 = 50%; 127 = 100%
Position A	16	0-1	0 = Back; 1 = Front
Level A	35	0-107	0 = -95dB; 95 = 0dB; 107 = 12dB
Phase A	36	0-1	0 = Normal; 1 = Invert
Mute A	37	0-1	0 = Off; 1 = On (Mute)
Mic B	38	0-7	0 = Mic #0; 1 = Mic #1...
Distance B	39	0-127	0 = 0%; 63 = 50%; 127 = 100%
Center B	40	0-127	0 = 0%; 63 = 50%; 127 = 100%
Position B	41	0-1	0 = Back; 1 = Front
Level B	42	0-107	0 = -95dB; 95 = 0dB; 107 = 12dB
Phase B	43	0-1	0 = Normal; 1 = Invert
Mute B	44	0-1	0 = Off; 1 = On (Mute)
Bypass A	51	0-1	0 = Off (Mic ON); 1 = On (Mic Bypass)
Bypass B	52	0-1	0 = Off (Mic ON); 1 = On (Mic Bypass)

EQ			
On/Off	17	0-1	0 = Off; 1 = On
Mode	18	0-2	0 = Guitar; 1 = Bass; 2 = Custom
Gain : Low	19	0-40	0 = -20dB; 20 = 0dB; 40 = 20dB
Gain : Low Mid	20	0-40	0 = -20dB; 20 = 0dB; 40 = 20dB
Gain : Mid	21	0-40	0 = -20dB; 20 = 0dB; 40 = 20dB
Gain : High Mid	22	0-40	0 = -20dB; 20 = 0dB; 40 = 20dB
Gain : High	23	0-40	0 = -20dB; 20 = 0dB; 40 = 20dB
Freq : Low Cut	45	0-127	Specific mapping to Hz
Freq : Low	46	0-127	Specific mapping to Hz
Freq : Low Mid	47	0-127	Specific mapping to Hz
Freq : Mid	48	0-127	Specific mapping to Hz
Freq : High Mid	49	0-127	Specific mapping to Hz
Freq : High	50	0-127	Specific mapping to Hz
Level			
Preset Level	24	0-95	0 = -95dB; 95 = 0dB
Reverb			
On/Off	25	0-1	0:Off 1:On
Preset	26	0-7	0 = Room #0; 1 = Room #1...
Dry Wet	27	0-127	0 = 0%; 63 = 50%; 127 = 100%
Size	53	0-127	0 = 0%; 63 = 50%; 127 = 100%
Echo	54	0-127	0 = 0%; 63 = 50%; 127 = 100%
Color	55	0-127	0 = 0%; 63 = 50%; 127 = 100%
Type	56	0-1	0:Room 1:Ambience
Noise Gate			
On/Off	57	0-1	0:Off 1:On
Mode	58	0-1	0:Soft 1:Hard
Threshold	59	0-80	0 = -80dB; 80 = 0dB
Enhancer			
On/Off	60	0-1	0:Off 1:On
Instrument	61	0-2	0 = Guitar; 1 = Bass
Body	62	0-127	0 = 0%; 63 = 50%; 127 = 100%
Thickness	63	0-127	0 = 0%; 63 = 50%; 127 = 100%
Brilliance	64	0-127	0 = 0%; 63 = 50%; 127 = 100%
Dry Wet	65	0-127	0 = 0%; 63 = 50%; 127 = 100%
General - Preset			
Mode	34	0-2	0 = Simulation; 1 = Arcade; 2 = IR Loader
General			
Out Level	66	0-107	0 = -95dB; 95 = 0dB; 107 = 12dB
Mute	67	0-1	0 = Off; 1 = On (Mute)
Bypass	68	0-1	0 = Bypass; 1 = On
Preset	69	0-127	0 = Preset #1; 1 = Preset #2...

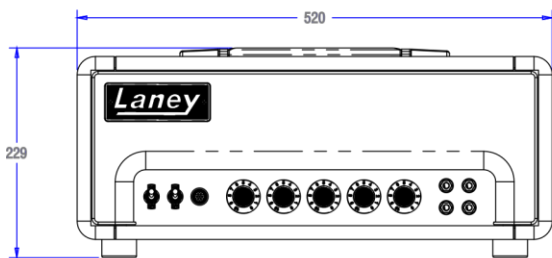
SPECIFICATIONS

Model	LA-STUDIO
Nominal Supply Voltage	100V~, 120V~, 220-240V~ Factory set
Mains Fuse	100-120V~ = T500mA L 250V, 220-240V~ = T250mA L 250V
Output Power	3W / 0.1W in Brake Mode
Power Consumption	40W
Preamp Tubes	3x ECC83 Large Plate Preamp Tubes
Output Tube	1x 12BH7 Power Tube
Inputs	CH1, Bass & Treble Input Sockets (Input Impedance 1Mohm, Sensitivity 15mV)
	CH2, Bass & Treble Input Sockets (Input Impedance 140Kohm, Sensitivity 30mV)
	Midi In 5 pin DIN
	USB Type A, to control Two Notes (Two Notes uses 24 bit, 96kHz AD-DA)
Outputs	1x8 & 1x16 ohm speaker outputs
	Midi Out/Thru 5 pin DIN
	Phones Out Stereo 3.5mm
	Balanced DI Out, Male XLR (With Two Notes emulation) and Ground Lift switch
Controls	Bass, Middle, Treble, Presence, Gain, Power Switch, Brake Switch
	Virtual cabinet 6W selector switch
Other	Peak led, for Two Notes
	Rugged plywood construction covered in hardwearing black vinyl
	Full internal reactive load for silent operation without a cabinet
Unit dimensions (HWD)	229 x 520 x 200 mm (9" x 20.5" x 7.9")
Net Weight	7.8Kg, 17.2 lbs
Carton dimensions (HWD)	325 x 685 x 290 mm (12.8" x 27" x 11.4")
Gross Weight	9.8Kg, 21.6 lbs
EAN	5060109457704

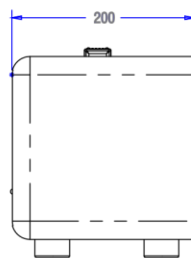
DIMENSIONS



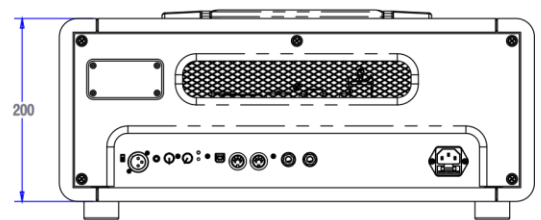
TOP



FRONT



RIGHT





REAR





SAFETY AND WARNINGS

In order to take full advantage of your new product and enjoy long and trouble-free performance, please read this owner's manual carefully, and keep it in a safe place for future reference.

- 1) **Unpacking:** On unpacking your product please check carefully for any signs of damage that may have occurred whilst in transit from the Laney factory to your dealer. In the unlikely event that there has been damage, please re-pack your unit in its original carton and consult your dealer. We strongly advise you to keep your original transit carton, since in the unlikely event that your unit should develop a fault, you will be able to return it to you dealer for rectification securely packed.
- 2) **Amplifier Connection:** In order to avoid damage, Generally it is advisable to establish and follow a pattern for turning on and off your system. With all system parts connected, turn on source equipment, mixers, effects processors etc, BEFORE turning on your amplifier. Many products have large transient surges at turn on and off which can cause damage to your speakers. By turning on your amplifier LAST and making sure its level control is set to a minimum, any transients from other equipment should not reach your loud speakers. Wait till all system parts have stabilised, usually a couple of seconds. Similarly when turning off your system always turn down the level controls on your amplifier and then turn off its power before turning off other equipment.
- 3) **Cables:** Never use shielded or microphone cable for any speaker connections as this will not be substantial enough to handle the amplifier load and could cause damage to your complete system. Use good quality shielded cables everywhere else.
- 4) **Servicing:** The user should not attempt to service these products. Refer all servicing to qualified service personnel.
- 5) Heed all warnings.
- 6) Follow all instructions.
- 7) Do not use this apparatus near water.
- 8) Clean only with a dry cloth.
- 9) Do not block any of the ventilation openings. Install in accordance with manufacturer's instructions.
- 10) Do not install near any heat sources such as radiators, heat registers, stoves or other apparatus (including amplifiers) that produce heat.
- 11) An apparatus with Class I construction shall be connected to a mains socket outlet with a protective connection. Do not defeat the safety purpose of the polarized or grounding-type plug. A polarized plug has two blades with one wider than the other. A grounding type plug has two blades and a third grounding prong. The wide blade or third prong is provided for your safety. If the provided plug does not fit into your outlet, consult an electrician for replacement of the obsolete outlet.
- 12) Protect the power cord from being walked on or pinched, particularly at plugs, convenience receptacles, and the point they exit from the apparatus.
- 13) Only use attachments/accessories provided by the manufacturer.
- 14) Use only with a cart, stand, tripod, bracket, or table specified by the manufacturer, or sold with the apparatus. When a cart is used, use caution when moving the cart/apparatus combination to avoid injury from tip-over.
- 15) The mains plug or appliance coupler is used as the disconnect device and shall remain readily operable. The user should allow easy access to any mains plug, mains coupler and mains switch used in conjunction with this unit thus making it readily operable. Unplug this apparatus during lightning storms or when unused for long periods of time.
- 16) Refer all servicing to qualified service personnel. Servicing is required when the apparatus has been damaged in any way, such as when power-supply cord or plug is damaged, liquid has been spilled or objects have fallen into the apparatus, the apparatus has been exposed to rain or moisture, does not operate normally, or has been dropped.
- 17) Never break off the ground pin. Connect only to a power supply of the type marked on the unit adjacent to the power supply cord.
- 18) If this product is to be mounted in an equipment rack, rear support should be provided.
- 19) Note for UK only: If the colours of the wires in the mains lead of this unit do not correspond with the terminals in your plug, proceed as follows:
 - o The wire that is coloured green and yellow must be connected to the terminal that is marked by the letter E, the earth symbol, coloured green or coloured green and yellow.
 - o The wire that is coloured blue must be connected to the terminal that is marked with the letter N or the colour black.
 - o The wire that is coloured brown must be connected to the terminal that is marked with the letter L or the colour red.
- 20) This electrical apparatus should not be exposed to dripping or splashing and care should be taken not to place objects containing liquids, such as vases, upon the apparatus.
- 21) Exposure to extremely high noise levels may cause a permanent hearing loss. Individuals vary considerably in susceptibility to noise-induced hearing loss, but nearly everyone will lose some hearing if exposed to sufficiently intense noise for a sufficient time. The U.S. Government's Occupational Safety and Health Administration (OSHA) has specified the following permissible noise level exposures: According to OSHA, any exposure in excess of the above permissible limits could result in some hearing loss. Earplugs or protectors to the ear canals or over the ears must be worn when operating this amplification system in order to prevent a permanent hearing loss, if exposure is in excess of the limits as set forth above. To ensure against potentially dangerous exposure to high sound pressure levels, it is recommended that all persons exposed to equipment capable of producing high sound pressure levels such as this amplification system be protected by hearing protectors while this unit is in operation.

Duration Per Day in Hours	Sound Level dBA, slow response
8	90
6	92
4	95
3	97
2	100
1 1/2	102
1	105
1/2	110
1/4 ou inférieur	115
- 22) If your appliance features a tilting mechanism or a kickback style cabinet, please use this design feature with caution. Due to the ease with which the amplifier can be moved between straight and tilted back positions, only use the amplifier on a level, stable surface. DO NOT operate the amplifier on a desk, table, shelf or otherwise unsuitable non-stable platform.
- 23) Symbols & nomenclature used on the product and in the product manuals, intended to alert the operator to areas where extra caution may be necessary, are as follows:

 CAUTION:	<p>Intended to alert the user to the presence of uninsulated 'Dangerous Voltage' within the products enclosure that may be sufficient to constitute a risk of electrical shock to persons.</p> <p>Ce symbole est utilise pur indiquer a l'utilisateur de ce produit de tension non-isolee dangereuse pouvant etre d'intensite suffisante pour constituer un risque de choc electrique.</p> <p>Este simbolo tiene el proposito de alertar al usuario de la presencia de '(voltaje) peligroso' que no tiene aislamiento dentro de la caja del producto que puede tener una magnitud suficiente como para constituir riesgo de corrientazo.</p> <p>Dieses Symbol soll den Anwender vor unisolierten gefahrlichen Spannungen innerhalb des Gehauses warnen, die von Ausreichender Starke sind, um einen elektrischen Schlag verursachen zu konnen.</p>
 WARNING:	<p>Intended to alert the user of the presence of important operating and maintenance (Servicing) instructions in the literature accompanying the product.</p> <p>Dieses Symbol soll den Anwender vor unisolierten gefahrlichen Spannungen innerhalb des Gehauses warnen, die von Ausreichender Starke sind, um einen elektrischen Schlag verursachen zu konnen.</p>

	<p>Este simbolo tiene el proposito de la alertar al usuario de la presencis de instrucccones importantes sobre la operacion y mantenimiento en la literatura que viene conel producto.</p> <p>Dieses Symbol soll den Benutzer auf wichtige Instruktionen in der Bedienungsanleitung aufmerksam machen, die Handhabung und Wartung des Produkts betreffen.</p>
<p>CAUTION:</p> <p>ATTENTION:</p> <p>PRECAUCION:</p> <p>VORSICHT:</p>	<p>Risk of electrical shock - DO NOT OPEN. To reduce the risk of electrical shock, do not remove the cover. No user serviceable parts inside. Refer servicing to qualified personnel.</p> <p>Risques de choc electrique - NE PAS OUVIRIR. Afin de reduire le risque de choc electrique, ne pas enlever le couvercle. Il ne se trouve a l'interieur aucune piece pouvant etre reparee par l'utilisateur. Confier l'entretien a un personnel qualifie.</p> <p>Riesgo de corrientazo - no abra. Para disminuir el risego de carrientazo, no abra la cubierta. No hay piezas adentro que el pueda reparar. Deje todo mantenimiento a los tecnicos calificadod.</p> <p>Risiko - Elektrischer Schlag! Nicht offen! Um das Risiko eines elektrischen Schlages zu vermeiden, nicht die Abdeckung entfernen. Es befinden sich keine Teile darin, die vow Anwender repariert werden Konnten. Reparaturen nur von qualifiziertem Fachpersonal durchfuhren lassen.</p>
<p>WARNING:</p> <p>ADVERTISSEMENT:</p> <p>ADVERTENCIA:</p> <p>ACHTUNG:</p>	<p>To prevent electrical shock or fire hazard, do not expose this appliance to rain or moisture. Before using this appliance please read the operating instructions for further warnings.</p> <p>Afin de prevenir les risques de decharge electrique ou de feu, n'exposez pas cet appareil a la pluie ou a l'humidite. Avant d'utiliser cet appareil, lisez les advertissements supplentaires situes dans le guide.</p> <p>Para evitar corrientazos o peligro de incendio, no deja expuesto a la lluvia o humedad este aparato Antes de usar este aparato, lea mas advertcias en la guia de operacion.</p> <p>Um einen elektrischen Schalg oder Feuergefahr zu vermeiden, sollte dieses Gerat nicht dem Regen oder Feuchtigkeit ausgesetzt werden. Vor Inbetriebnahme unbedingt die Bedienungsanleitung lesen.</p>
	<p>This device complies with Part 15 of the FCC rules Operation is subject to the following two conditions:</p> <ol style="list-style-type: none"> 1) This device may not cause harmful interference 2) This device must accept any interference received, that may cause undesired operation. <p>Warning: Changes or modification to the equipment not approved by Laney can void the user's authority to use the equipment.</p> <p>Note: This equipment has been tested and found to comply with the limits for Class B digital device, pursuant to Part 15 of the FCC Rules. These limits are designed to provide reasonable protection against harmful interference in a residential installation. This equipment generates, uses and can radiate radio frequency energy and if not installed and used in accordance with the instructions, may cause harmful interference to radio communications. However, there is no guarantee that interference will not occur in a particular installation. If this equipment does cause harmful interference to radio or television reception, which can be determined by turning the equipment off and on, the user is encouraged to try and correct the interference by one or more of the following measures. Reorient or relocate the receiving antenna. Increase the separation between the equipment and receiver. Connect the equipment into an outlet on a circuit different from that to which the receiver is connected. Consult the dealer or an experienced radio/TV technician for help.</p>
	<p>This product conforms to the requirements of the following European Regulations, Directives & Rules: CE Mark (93/68/EEC), Low Voltage (2014/35/EU), EMC (2014/30/EU), RoHS (2011/65/EU), ErP (2009/125/EU)</p> <p>SIMPLIFIED EU DECLARATION OF CONFORMITY</p> <p>Hereby, Laney Electronics Ltd. declares that the radio equipment is in compliance with Directives 2014/53/EU, 2011/65/EU, 2009/125/EU. Full text of the EU declaration of conformity is available at the following internet address:</p> <p>http://support.laney.co.uk/approvals</p>
	<p>The object of the declaration described above is in conformity with the relevant statutory requirement Electrical Equipment (Safety) Regulations 2016, Electromagnetic Compatibility Regulations 2016, The Restriction of the use of Certain Hazardous Substances in Electrical and Electronic Equipment Regulations 2012, The Ecodesign for Energy-Related Products and Energy Information, (Amendment) (EU Exit) Regulations 2012</p>
	<p>In order to reduce environmental damage, at the end of its useful life, this product must not be disposed of along with normal household waste to landfill sites. It must be taken to an approved recycling centre according to the recommendations of the WEEE (Waste Electrical and Electronic Equipment) directive applicable in your country.</p>

BLACK COUNTRY CUSTOMS™

HANDCRAFTED IN THE UK



LANEY ELECTRONICS LTD.
STEELPARK ROAD, COOMBSWOOD BUSINESS PARK WEST, HALESOWEN, B62 8HD. UK
FOR THE LATEST INFORMATION PLEASE VISIT WWW.LANEY.CO.UK

IN THE INTEREST OF CONTINUED DEVELOPMENT, LANEY RESERVES THE RIGHT TO AMEND PRODUCT SPECIFICATION WITHOUT PRIOR NOTIFICATION.

V1.1



DESIGNED, ENGINEERED & MADE IN THE U.K.